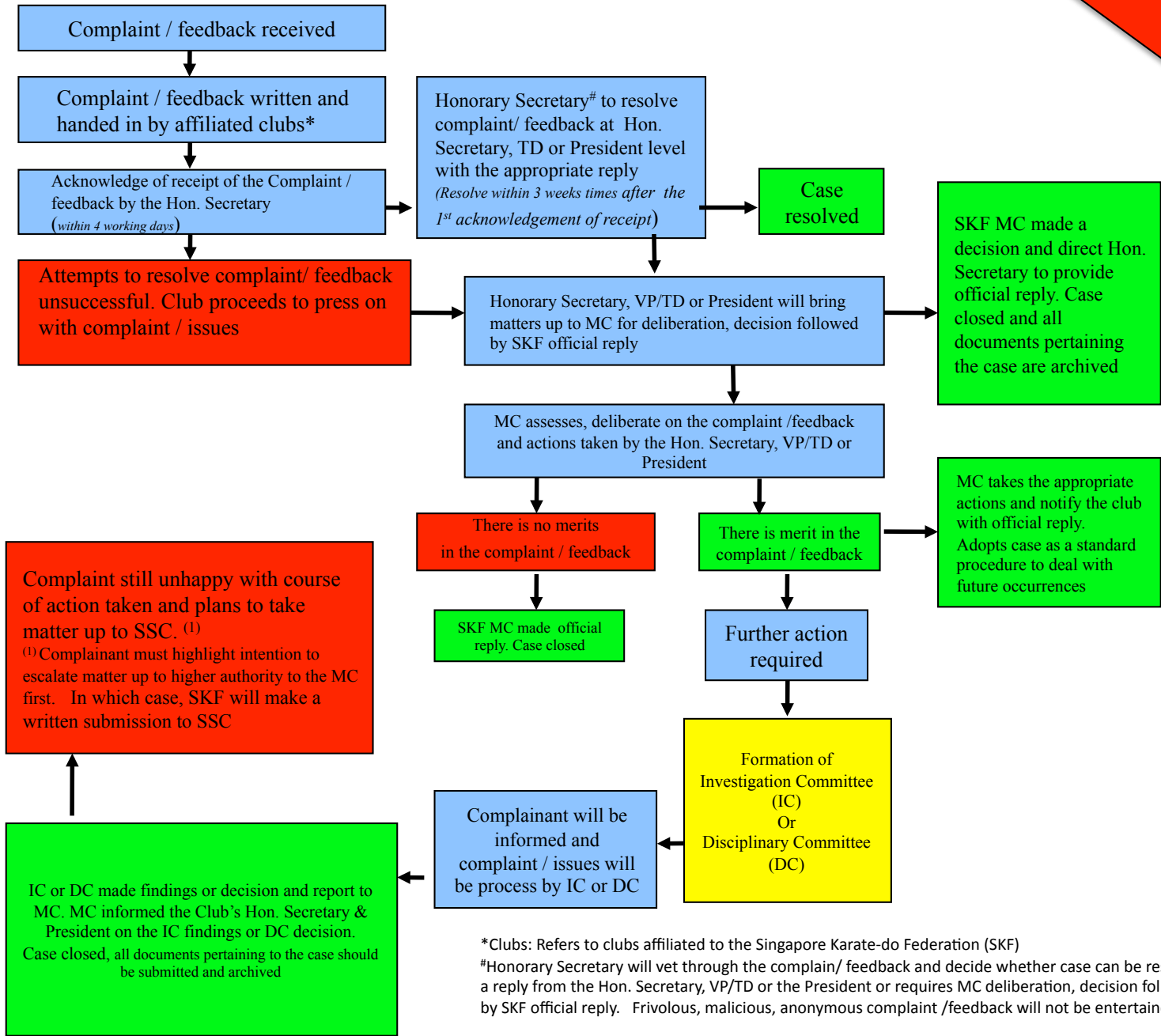
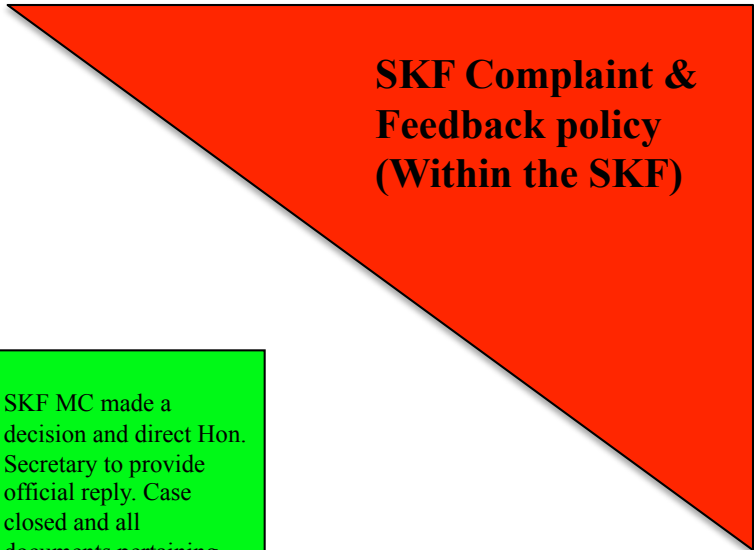


# Annex A: SKF Complaints & Feedback Management



\*Clubs: Refers to clubs affiliated to the Singapore Karate-do Federation (SKF)  
 #Honorary Secretary will vet through the complain/ feedback and decide whether case can be resolve by a reply from the Hon. Secretary, VP/TD or the President or requires MC deliberation, decision followed by SKF official reply. Frivolous, malicious, anonymous complaint /feedback will not be entertained.

# Annex A: SKF Complaints & Feedback Management

